



YOUR PARTNER FOR SUSTAINABLE DEVELOPMENT AND SAFETY

Infrastructure & Buildings · Marine · Environmental & Real Estate





We are committed to building your *future*

Our **Vision** is to help preserve the integrity of infrastructure and buildings, making them more efficient and optimizing their **technical, environmental, economic** and **sustainability** performance. We also identify, assess and manage risks in terms of **quality, health** and **safety** throughout the entire **life cycle**, from construction to decommissioning, including maintenance during operation.



*A strategic national network
to ensure proximity and
expertise in every region.*



N°1
Building
Control

In French and UK



N°1
Testing, Inspection,
Certification &
Compliance

In UK and Italy



N°1
Wind Farms and
Photovoltaic Plant
Inspection

In French

Sectors we operate in



**CONSULTING &
SPECIALIST SERVICES**

Consulting, Waste Management & Remediation



**ENERGY &
NATURAL RESOURCES**

Oil & Gas, Multi-utilities, Energy Infrastructure



**INFRASTRUCTURE &
TRANSPORT**

Railways & Metro, Airports, Motorways & Roads, Ports



**CONSTRUCTION &
MAJOR PROJECTS**

Bridges, Tunnels, Dams, Civil & Industrial Buildings



**INDUSTRY &
MANUFACTURING**

Industrial Sector, Food Industry



**SPECIALIZED
SECTORS**

Offshore Infrastructure



**REAL
ESTATE**

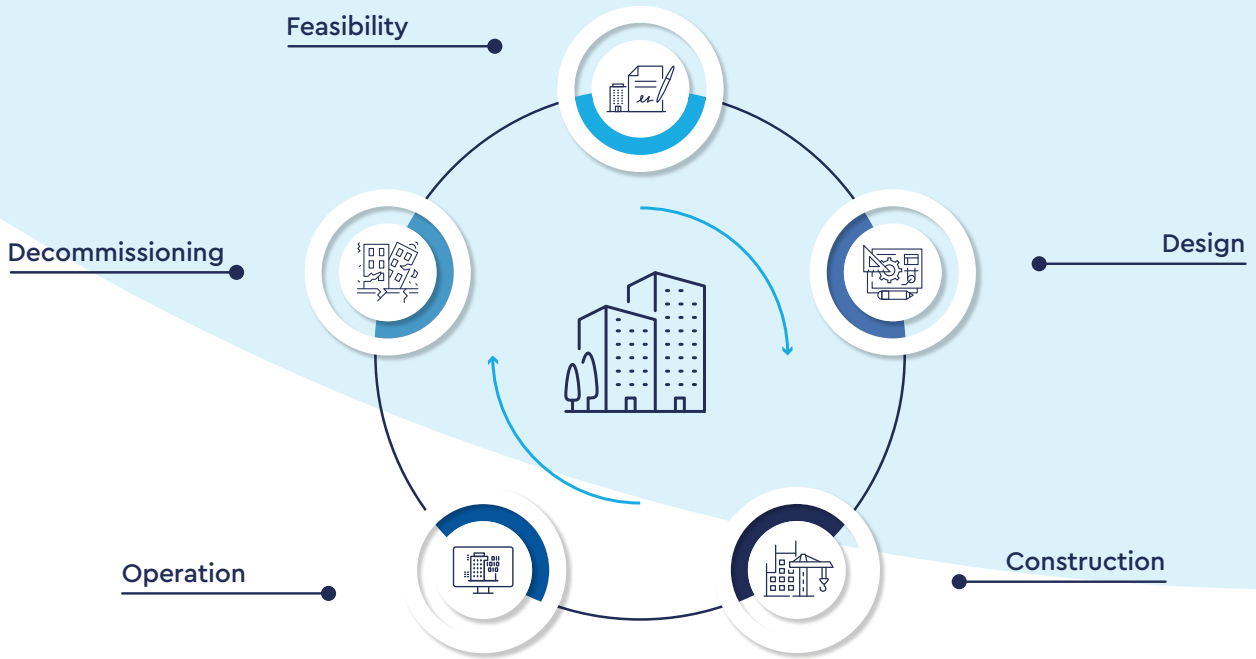
ESG Consulting

A team of
EXPERTS ready
to tackle any
challenge



Strategic Vision

Services across the entire lifecycle of infrastructure and buildings



Maintenance Phase →

	Feasibility	Design	Construction	Operation	Decommissioning
● Environmental Services	[Active]				
● Remediation of Contaminated Sites	[Active]				
● ESG Solutions	[Active]				
● Geophysical Surveys	[Active]				
● Geotechnical Investigations		[Active]			[Active]
● Topographic Surveys		[Active]			[Active]
● Structural Monitoring			[Active]		
● Laboratory Testing	[Active]				
● On-site and Mobile Laboratories			[Active]		
● Non-Destructive Testing			[Active]		
● Marine Services	[Active]				

Business Line Services



Sustainability & Environmental Solutions

- **Environmental Analysis Laboratory:**

Chemical and Microbiological Analyses Waste Classification
 Water, Soil and Waste Analytical Chemistry Leaching Tests
 Air Emissions Analysis

- **Environmental Monitoring (EMP)**

Environmental Monitoring Plans (EMP) Noise and Vibrations
 Flora and Fauna Monitoring Air Quality and Dust
 On-site Sampling Environmental Components

- **Remediation and Rehabilitation:**

Contaminated Site Remediation Site Safety Measures
 MIP/OIP Technologies (Injection Techniques) Direct Push
 Groundwater Remediation Environmental Site Investigations

- **Product Sustainability**

LCA Carbon Footprint EPD PEP Ecopassport FSC FDES
 C2C Remade in Italy

- **Asbestos and Industrial Hygiene**

Asbestos and Man-Made Fibres Laboratory (MOCF/SEM)
 Asbestos Mapping (Version 2.0) Risk Assessment
 Hazardous Materials Survey Occupational Hygiene

- **Sustainability & Real Estate**

LEED, BREEAM, WELL Certifications WiredScore ENVISION®
 BiodiverCity® SITES® Energy Audits
 Climate Risk Analysis Building Sustainability Resilient plan
 Real Estate Due Diligence EU Taxonomy Biodiversity
 Circularity Net Zero Strategy

- **ESG Strategy and Decarbonization:**

ESG Strategies & Reporting Sustainability Reports
 EHS and ESG Due Diligence Decarbonization Plans
 Carbon Footprint & LCA (Life Cycle Assessment)



Infrastructure Services

- **Geognostic and Geotechnical Investigations:**

Core Drilling Penetration Tests (CPT/SPT/DPSH)
 Plate Load Tests Permeability Tests Pressuremeter Tests
 Laboratory Geotechnics

- **Quality Control Laboratories:**

Soils and Rocks Materials, Concrete & Steel Mix Design
 Technological Materials Metallurgy Calibration

- **Structural Diagnostics and NDT:**

Diagnostics of Concrete / Masonry / Wood / Steel
 Magnetic Testing (MT) NDT ISO 9712 Ultrasonic Testing (UT)
 Infrared Thermography (IRT) Liquid Penetrant Testing (PT)

- **Monitoring and SHM:**

Structural and Geotechnic Fiber Optic Sensors
 Web-GIS Platform (DDS) Vibration Monitoring
 Real-Time IoT Sensors

- **Geophysics and Mapping:**

Georadar (GPR) Seismic and Electrical Surveys Tomography
 UXO Survey (Unexploded Ordnance Detection)
 Geophysical Prospecting Structural Geophysics

- **Road Pavement Control:**

Mobile Site Laboratories On-site Quality Control
 Road Pavements Bituminous Mixtures

- **Topography and Precision Surveys:**

3D Laser Scanning Drones (UAV) GPS / GNSS
 Digital Models (DTM/DSM) As-Built Surveys
 Topographic Monitoring Total Stations

- **Inspections and Testing:**

Visual Testing (VT) Asset Inventory Static Testing
 Technical Inspections Surveying for Testing
 Design Support



Marine Services

Survey & Monitoring Services

SOCOTEC Italia positions itself as a reference partner for the marine sector, with a focus on applications in ports and coastal areas. We go beyond simple seabed mapping: we design, install and manage continuous monitoring systems to provide accurate and reliable data.

We offer a “turnkey” service characterized by high technical expertise for the collection of data and the control of meteo-marine parameters, up to the remote management of naval signalling systems. Our technological approach ensures safety in offshore operations and the protection of the marine ecosystem.

From seabed exploration to real-time meteo-marine monitoring.

Our Services

- **Marine Survey**

Bathymetric Surveys (Multibeam) Side Scan Sonar (SSS) ROV Inspections
Magnetometry UXO Survey (Unexploded Ordnance Detection)
Morpho-bathymetric Surveys Marine Environmental Monitoring

- **Geotechnics**

Coring and Vibrocore Marine Penetration Tests (CPT/CPTu)
Environmental Sampling (Grab/Box Corer) Dredging Support
Seabed Geotechnical Characterization

- **Meteo-Marine Monitoring & Buoys**

Wave and Current Buoys Real-time Monitoring
Meteo-marine Parameters (Wind, Waves, Currents)
Multiparametric Buoys (Water Quality)
Station Installation and Maintenance

- **Telecontrol and Signalling**


Remote Monitoring Systems for Marine Aids to Navigation (AtoN)
Remote Monitoring of Beacons and Buoys Smart Buoys Technology
Solar Power Management Underwater Acoustic Monitoring



Testing


Our Authorized Laboratories

	Lainate (MI)	Genoa	Ferrara	Ortona (CH)	Avellino	Trento
Construction Materials						
Soils and Rocks						
Bituminous Mixtures						
Chemical						
Microbiological						
Asbestos						
Technological						
Metallurgical						
Calibration						

 Laboratory authorized by the Ministry of Infrastructure

 Laboratory accredited ISO/IEC 17025 by Accredia

 Laboratory authorized by the Ministry of Health

 * Laboratories for testing construction materials and structures are authorized pursuant to Circular No. 633/STC of 02/12/2019 of the Ministry of Infrastructure.



Calibration and Metrology Services

Certified accuracy

The Avellino Metrology Center provides a transversal calibration service applicable to any type of instrumentation and machinery. We support companies in the metrological management of their equipment fleet, ensuring traceability and certification of measurements for every operational need, regardless of the technical complexity of the devices.

We put our precision at the service of your business:
calibration services to ensure the reliability of your instruments.

ESG Strategy for Real Estate, Corporates & Products

We support investors, developers, design firms and construction companies in integrating ESG criteria and sustainability strategies throughout the entire lifecycle of real estate assets.

We support you with our **consulting services** in:



Green &
Healthy Building



ESG Strategy &
Due Diligence & Reporting



Ecology & Biodiversity



Product Certifications
& Carbon Footprint



Infrastructure Sustainability
& Resilience

Green & Healthy Buildings

Resilient, healthy and high-performance buildings

We guide the development and redevelopment of real estate assets through certifications such as LEED, BREEAM, WELL, WiredScore and Fitwel, energy efficiency strategies, decarbonization plans and climate resilience. We operate as a WELL Performance Testing Provider.

Ecology & Biodiversity

Nature-based strategies for resilient assets and territories

We enhance biodiversity through ecological analysis, monitoring and nature-based design of buildings, infrastructure and agricultural areas. We manage certifications such as BiodiverCity®, BREEAM® and SITES®, and apply the SBV (Site Biodiversity Value) index to measure Net Gain Biodiversity.

Infrastructure Sustainability & Resilience

ESG strategies for resilient and future-ready infrastructure

We integrate ESG criteria throughout the entire infrastructure lifecycle for public and private stakeholders. Through LCA analysis and climate adaptation strategies, we define decarbonization and resilience roadmaps. We apply ENVISION® and BREEAM® Infrastructure protocols.

ESG Strategy, Due Diligence & Reporting

ESG strategies for growth and access to financing

We support top management in integrating ESG criteria into decision-making processes and governance, transforming regulatory obligations into strategic levers. We conduct ESG/EHS due diligence for vendors and acquisitions, and develop decarbonization roadmaps for the supply chain.

Product Sustainability & Carbon Footprint

From impact measurement to ecodesign

We support companies in ecodesign and in obtaining LCA certifications, organizational and product carbon footprints, and Zero strategies. We assist product qualification through environmental certifications such as EPD, PEP, Ecopassport, FSC, FDES, C2C and Remade in Italy.

Environmental & Remediation

Our Technology Hub in Lainate is the scientific core of the Environmental division. Accredited by Accredia and authorized by the competent Ministries, it transforms analytical data into operational safety.

Asbestos Center of Excellence

We are one of the reference laboratories in Italy, authorized by the Ministry of Health for the complete management of asbestos risk.

Advanced Diagnostics

We use Optical Microscopy (MOCF) and Scanning Electron Microscopy (SEM) to identify asbestos fibers and Man-Made Vitreous Fibers (MMVF) in massive and airborne samples.

Post-Remediation Sampling

We perform sampling activities following remediation interventions to verify that environments are free from reusable materials, issuing clearance certificates in compliance with regulations.

Environmental Monitoring Plans (EMP)

Integrated Environmental Monitoring

Environmental Agents

Monitoring of noise, vibrations and dust (PM10/PM2.5) to ensure compliance with legal limits and environmental quality.

Biodiversity

Specialized surveys on flora, vegetation and fauna (avian, amphibian, phytosanitary) to ensure that projects do not compromise protected natural habitats.

Contaminated Sites & Brownfield Remediation

We restore value to decommissioned industrial land through smart remediation technologies

In-situ Technologies

We use technologies such as Direct Push (MIP/HPV) to map subsurface contamination with centimetric precision, reducing investigation costs.

On-site Intervention

We design remediation interventions that treat contamination directly in the ground (through targeted injections), avoiding costly excavation and off-site disposal (MIP/OIP).

Soil, Rock and Sediment Chemistry



We turn disposal obligations into cost-saving opportunities. Through accredited commodity analyses and leaching tests, we correctly classify each material, prioritizing recovery and reuse pathways that reduce environmental and economic costs on site.

Water Cycle and Biological Risk

Environmental protection starts from reliable data.

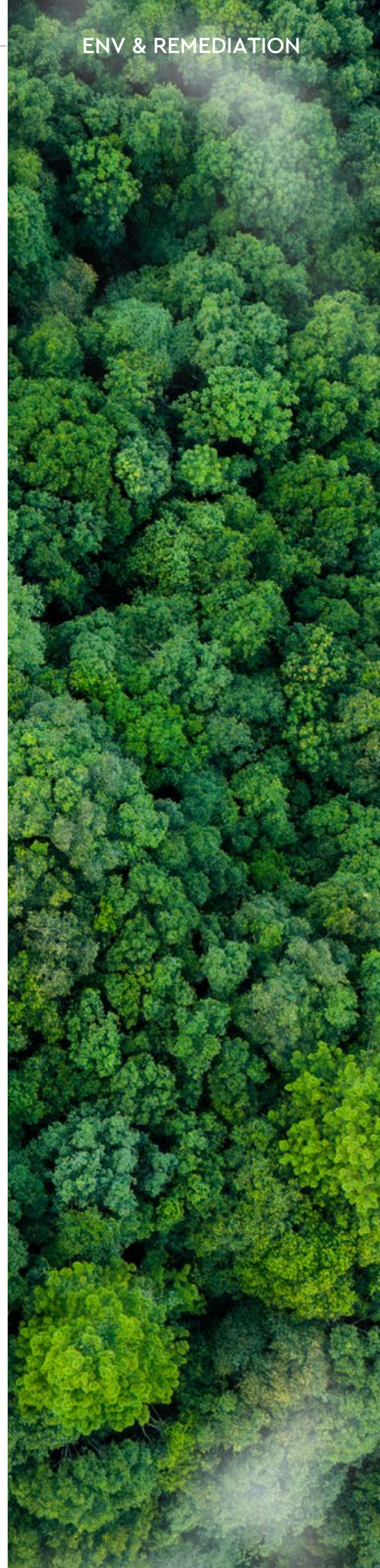
Legionella Risk

We support companies and healthcare facilities in the prevention of Legionellosis. We carry out accredited sampling and microbiological analyses (culture method and PCR) to validate the safety of water systems.

Chemical Analysis

Monitoring of groundwater, wastewater and process water to ensure compliance with regulatory limits (Legislative Decree 152/06).

From healthy workplaces to the protection of local communities: we ensure that your vision grows in full respect of public health.





A structured Green Trust service to support the environmental objectives of the EU Taxonomy derived from the Green Deal.

GREEN TRUST by SOCOTEC

The technical guarantee for the ecological transition.

With our Green Trust proprietary approach, we demonstrate and certify sustainability performance with transparency. We verify that your buildings, infrastructures and plants are fully aligned with the strict standards of the EU Taxonomy.

Optimization & Real Value

We enhance the real effectiveness of environmental actions through a clear and measurable approach, going beyond simple documentary compliance.

Full Compliance

We ensure compliance with the requirements of the Green Deal, in line with international technical standards (including ITC Council), thanks to multidisciplinary teams.

Impact Audit

We provide a comprehensive report, objective and indisputable, certifying the environmental and sustainability performance of the asset for investors and stakeholders.

Our verification framework covers all EU pillars:



Climate change mitigation



Climate change adaptation



Circular economy



Sustainable use of water



Pollution prevention and control



Biodiversity protection

➔ Solutions to support your energy and environmental transition and the sustainability of infrastructures.

From Taxonomy to Construction Site: safety and sustainability for major works

We apply the principles of Green Trust to the most complex infrastructures in the country. From major railway networks to renewable energy developments, our technical approach ensures that construction and operation minimize the impact on the surrounding ecosystem.

Railway Projects



HS/HC Terzo Valico dei Giovi

HS/HC Verona-Padova

HS/HC Napoli-Bari

Brenner Base Tunnel

We are active on the main Italian and European railway corridors, including the AV/AC Terzo Valico dei Giovi, the AV/AC Napoli-Bari and the Brenner Base Tunnel.

The value of Green Trust: we support infrastructure owners and contractors in reducing project risks. During construction, our laboratories ensure the highest quality of materials and rigorous control on soils and rocks, guaranteeing that infrastructure development fully respects the territory.

Special Projects



Monitoring of infrastructures

Rome Metro

Through the use of advanced sensors, Web-GIS platforms and automated monitoring systems, we support clients in safeguarding the urban environment during construction and management of complex works.

Geotechnical Monitoring

Structural Monitoring

Heritage Protection DDS & Web-GIS

Sensor Automation Tunnels and Stations



Offshore surveys

Windfarm in Taranto

For large-scale renewable energy installations, safety starts from the seabed. We carry out geophysical surveys, marine geotechnical investigations, and biocenotic assessments to ensure robust design with minimal impact on the marine ecosystem.

Marine Geophysics & Geotechnics

Biocenotic Surveys

Design Support



Industrial site remediation

Groundwater Remediation

We remediate contaminated land using innovative technologies such as Direct Push (MIP/OIP), optimizing environmental remediation and reducing costs and execution time.

Direct Push Technology RegenOx & ORC

Groundwater Bioremediation

Selective Injections

Let's build strong foundations together

Geognostics & Geophysics

We provide solid foundations for your vision.
We eliminate geological risks to ensure the stability of your project from the very beginning.

At every stage, SOCOTEC is not limited to data delivery: we support our partners in defining the most effective geological approach, transforming subsurface uncertainty into a safe and actionable plan. Our goal is to mitigate geological risks during the early phases to guarantee feasibility and long-term stability of the project.

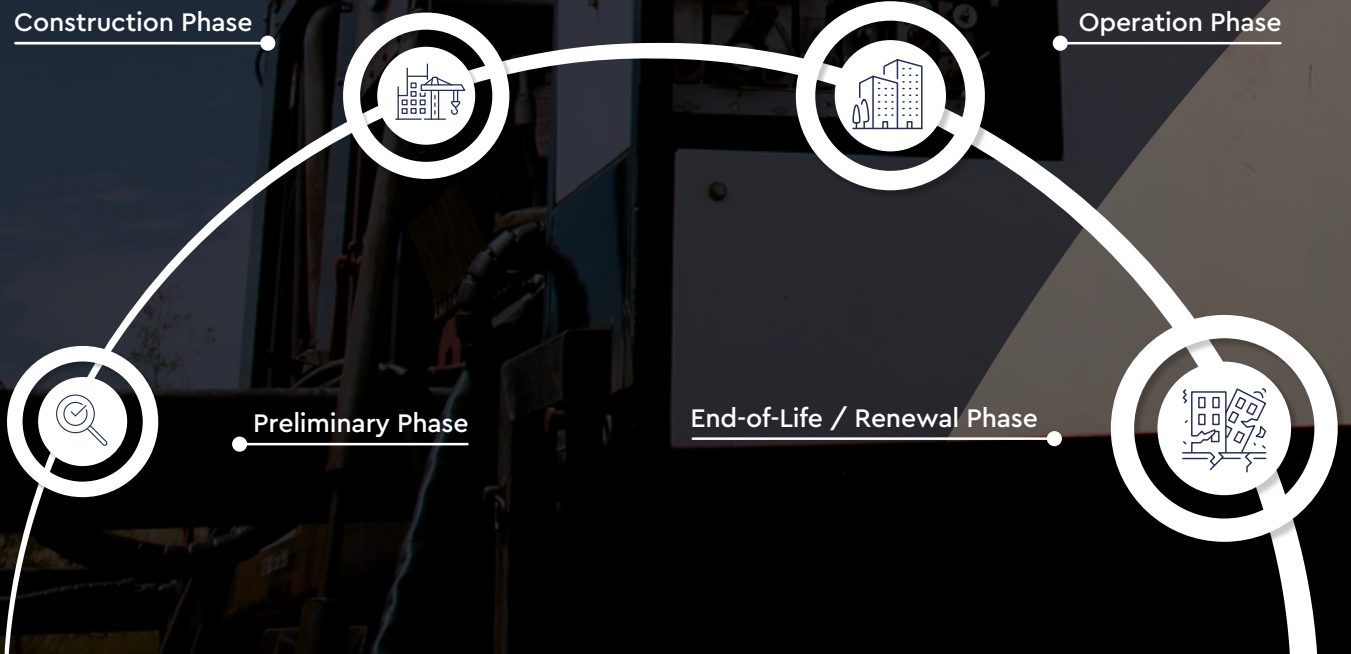
By your side, at every phases

Construction Phase

Operation Phase

Preliminary Phase

End-of-Life / Renewal Phase



Our added value for the Partner

Risk Mitigation

From excavation to initial investigations, to in situ testing. Through geophysical investigations (Georadar, Seismic, Electrical) and UXO Survey (Unexploded Ordnance detection), we detect cavities, subsurface anomalies and critical zones. This preventive approach drastically reduces the probability of geological “surprises” that could cause delays on site.

Design Optimization

We provide detailed geotechnical parameters for foundation design. Thanks to in situ tests (CPT, SPT, Pressuremeter) and laboratory tests, we enable designers to calculate structures without unnecessary oversizing, ensuring the perfect balance between safety and economic efficiency.

Speed and Non-Invasiveness

We use advanced subsurface imaging technologies (Tomography, GPR) that allow rapid data acquisition, even in dense urban or sensitive areas such as archaeological sites, where it is necessary to understand what lies beneath without excavation.

Integrated Geological Modeling

Our added value lies in data interpretation. Our geologists and engineers combine punctual data with extensive geophysical data to deliver a reliable 3D reconstruction of the subsurface, an essential basis for every engineering decision.



Monitoring & Topography

We provide millimetric control of space and time: measuring reality today to ensure safety tomorrow.



For more information
specific technical details and
completed projects are
available on our website.

Our added value for the Partner

Digitalization and Digital Twin

We measure the present to model the future.

We integrate traditional surveying methodologies with innovative solutions such as Laser Scanner, Drones (UAV) and Digital Twin platforms. This allows Project Managers, Asset Owners and Site Managers to make decisions based on accurate and up-to-date data, reducing errors and improving efficiency.

Active Structural Monitoring (SHM)

Safety never stops.

We go beyond punctual control to continuous monitoring. We install sensors (fiber optics, inclinometers, accelerometers and IoT systems) that provide real-time data, enabling predictive management of risk and immediate intervention in case of anomalies.

Urban Context Protection (Vibration & Interference Monitoring)

Building with respect for the existing environment.

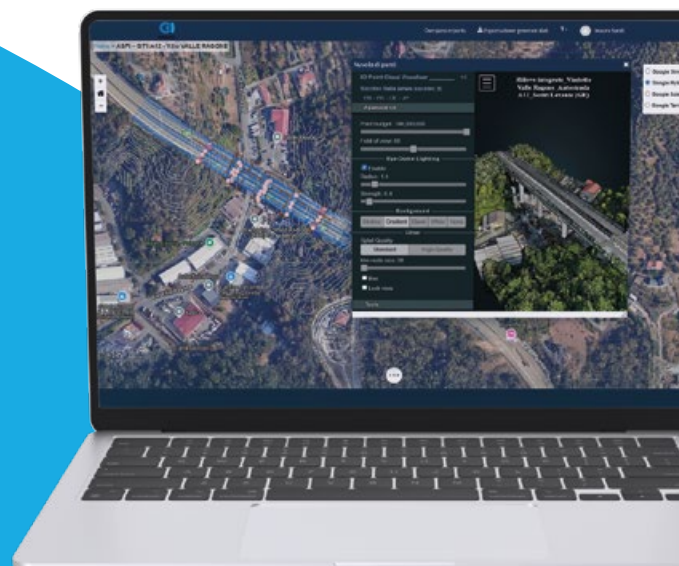
In complex urban sites, we protect the surrounding context.

We monitor vibrations and deformations on adjacent structures and infrastructures, ensuring that construction activities do not cause damage to nearby assets.

Data Intelligence & Web-GIS Platform

Data becomes decision.

We centralize all monitoring data on our proprietary Web-GIS (DDS) platform, accessible via cloud. We provide intuitive dashboards to visualize infrastructure health, manage alerts and plan maintenance based on objective data, not assumptions.



Testing & Structural Diagnostics

We verify the quality of materials and the integrity of structures to ensure safety, compliance and durability over time.

The durability of an infrastructure is built on two fundamental pillars: the excellence of materials during construction and a deep understanding of the asset's condition over time.

SOCOTEC acts as an Independent Third Party, providing indisputable technical validation. From laboratory certification of materials to complex diagnostics on bridges and viaducts, we deliver our Partners the objective data required to commission new works and maintain existing assets, in full compliance with the Italian Technical Standards for Construction (NTC).

Our added value for the Partner

Quality Control and Certification

Compliance comes first.

Through our extensive network of laboratories authorized by the Ministry, we carry out official testing on concrete, steel, binders and bricks. Our testing is not only a regulatory requirement, but also legal protection for the client and the contractor: we ensure that every supply meets the specification requirements, eliminating the risk of future disputes regarding the quality of the work.

Diagnostics and Seismic Vulnerability

To know is to protect.

We support asset-managing bodies in the challenge of infrastructure safety. We carry out investigation campaigns on existing structures (bridges, tunnels, historic buildings) to assess residual strength and seismic vulnerability. We provide designers with an exact "snapshot" of the materials in place, through core sampling, flat jacks and load tests, an essential basis for designing targeted and cost-effective structural strengthening measures.

Non-Destructive Testing (NDT)

Technology that sees the invisible.

To inspect without causing damage, we deploy highly qualified certified technicians (ISO 9712). We use advanced technologies such as Ultrasonic Testing (UT), Magnetic Testing (MT), Thermography (IRT) and Liquid Penetrant Testing (PT) to identify hidden defects, corrosion or internal detachments. This preventive approach makes it possible to intercept degradation before it becomes critical, extending the useful life of the asset.

Mobile Laboratories and Site Management

Just-in-Time control.

In major linear infrastructure projects, logistics are crucial. We bring certification directly to the construction site by setting up dedicated Mobile Laboratories. We carry out real-time testing on soils, bituminous mixtures and concrete during casting and laying phases. This eliminates result waiting times, speeds up production and gives the Works Director immediate control over quality.

For more information
specific technical details and
completed projects are
available on our website.



TRUST & TECH BY SOCOTEC

Technology supporting our **experts**

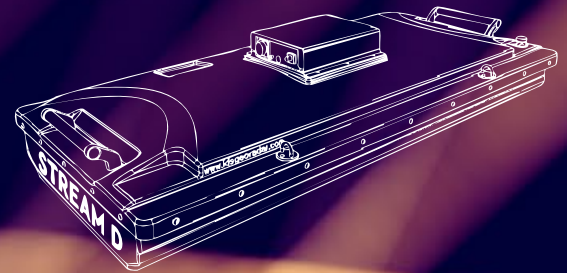
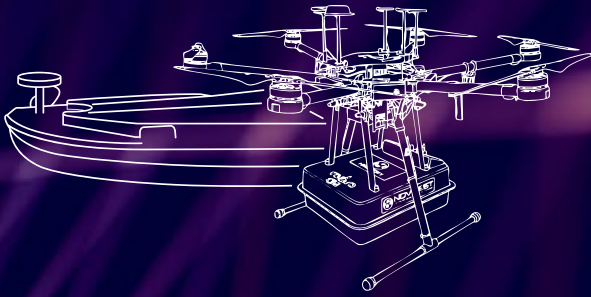
Trust & Tech by SOCOTEC combines technological expertise with our professionals' experience, creating synergies between technical consultancy and risk management across the Construction, Infrastructure and Industry sectors, in a context of environmental, energy and digital transformation.

↳ As an independent third party, we provide our clients with the most advanced technical expertise and technologies.

Remote Inspections & Robotics

Aerial and Marine Drones

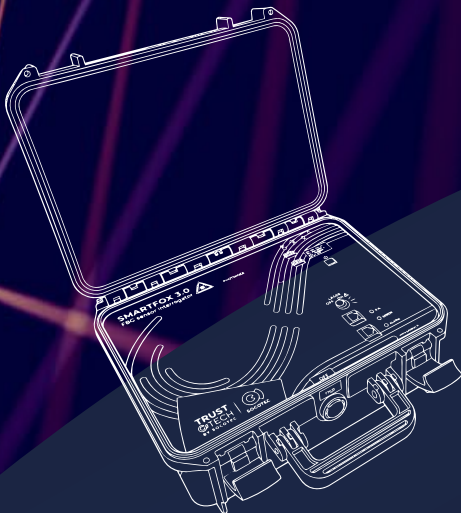
We go where the human eye cannot. Drones equipped with laser scanners and thermal cameras for high-altitude inspections, and autonomous marine vehicles (USV) with multibeam systems to map seabeds and submerged structures.



Non-Destructive Testing

Georadar and Tomography

We look beyond the surface. GPR (Ground Penetrating Radar), seismic and electrical tomography technologies to scan the subsoil, concrete and tunnels without damaging the structure.



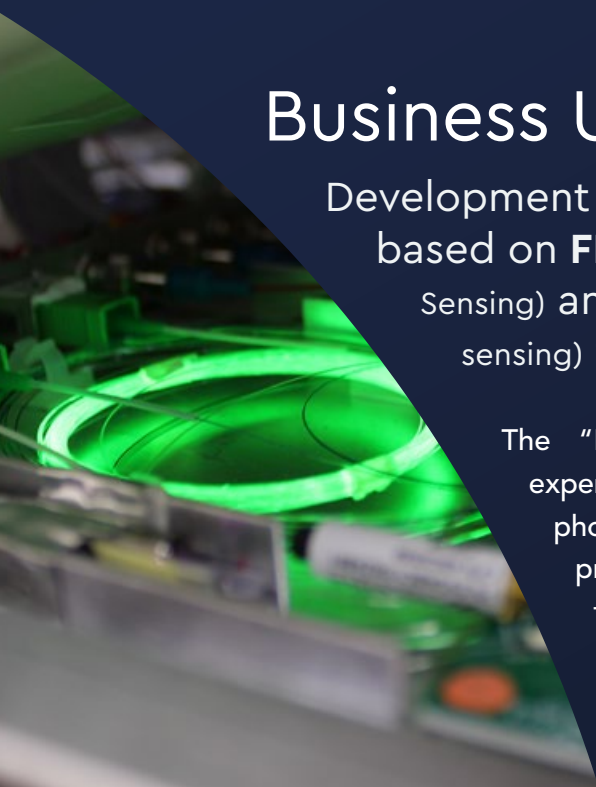
Smart Sensing

We listen to the "breathing" of structures. We use fiber optic sensors (FBG and distributed) and IoT systems for static and dynamic monitoring, with micrometric precision, resistant to corrosion and interference, and durable over time.

Business Unit Photonics

Development and in-house manufacturing of systems based on **FBG** (Fiber Bragg Grating), **DAS** (Distributed Acoustic Sensing) and **Brillouin** (distributed strain and temperature sensing) technologies.

The "Photonics" Business Unit combines SOCOTEC Monitoring's experience in structural monitoring and diagnostics with proprietary photonic technologies developed internally. Thanks to the direct production of sensors and interrogators, SOCOTEC Monitoring further strengthens its ability to compete on a global scale, offering integrated, high value-added technological solutions.



Our References

The major infrastructure challenges where we have transformed our technical expertise into safety and concrete solutions.



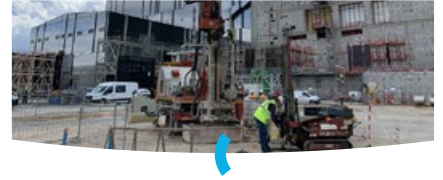
AV/AC Railway Bypass
Trento, Italy

- Material Monitoring
- Subsidence and Vibration Monitoring
- Geotechnical Investigations
- Geotechnical and Structural Sensors
- Data Management and Remote Control



San Giorgio Bridge
Genoa, Italy

- Material Quality Control (24/7 Lab)
- Geognostic and Geotechnical Investigations
- NDT & control Pile Foundation Surveys
- Concrete Thermal Monitoring
- Static and Dynamic Testing



ITER Project
Cadarache, France

- Geophysical Surveys
- Geognostic Investigations
- Penetration Tests
- Soil and Rock Analysis
- Diagnostic Investigations



Tyrrhenian Link
Italy

- UXO Risk Assessment
- Monitoring of Benthic Communities
- ROV Inspections and Geophysical Surveys
- Water and Sediment Characterization
- Marine Grassland Assessment



Tunnels Assessment
Italy

- Highway Tunnel Characterization
- Non-Destructive Testing (NDT)
- Advanced Georadar Surveys
- Void Detection
- Lining Thickness Mapping



Cassiopea Project
Sicily, Italy

- Preliminary Offshore Investigations
- Marine Geophysics
- Environmental Monitoring
- Marine Sediment Characterization
- Geotechnical Seabed Characterization



Fiber Optic Monitoring
Republic of Congo

- Offshore Structural Monitoring
- Fiber Optic Sensors (FBG)
- ATEX Area Certification
- Load Analysis and Lifting
- Advanced Thermal Compensation



PerGenova Breakwater
Genoa, Italy

- Environmental Monitoring and Analysis
- Drilling and Geophysical Surveys
- Geotechnical and Structural Monitoring
- Multibeam Surveys
- On-site and Laboratory Material Testing



UXO Survey
A8 Milan-Varese Highway, Italy

- 3D Electrical Resistivity Tomography (ERT)
- UXO Detection (Unexploded Ordnance)
- Induced Polarization Surveys (IP)
- Preventive Geophysical Investigations
- Metallic Mass Identification

Our References in Green Consulting and Certifications



Bosco Verticale
Milan, Italy

LEED® GOLD

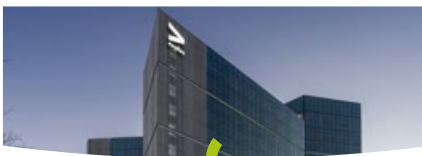
LEED® Construction Phase



Unicredit Tower
Milan, Italy

LEED® GOLD

LEED® Construction Phase



U1 Building Milanofiori
Assago, Italy

LEED® GOLD LEED® Administration

LEED® Design Phase

Energy Modeling WELL® Administration

WELL® Design Phase



BNP Paribas Headquarter
Rome, Italy

LEED® GOLD LEED® Administration

LEED® Design Phase

LEED® Construction Supervision

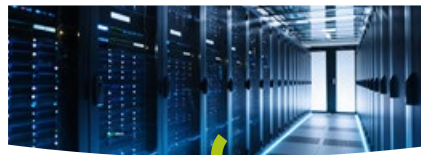


Hotel La Posta Vecchia
Ladispoli, Rome, Italy

BREEAM® In Use Preassessment

Hazard and Climate Change Risk Assessment

CRREM Report



NOOVLE Datacenter
Rivoli, Torino, Italy

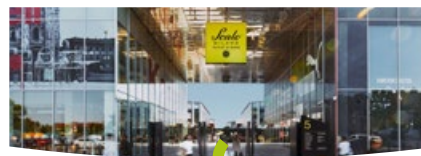
LEED® in Design & Construction



Amazon Logistics Center MXP6
Novara (Agognate), Italy

BREEAM® EXCELLENT

BREEAM® Design Phase

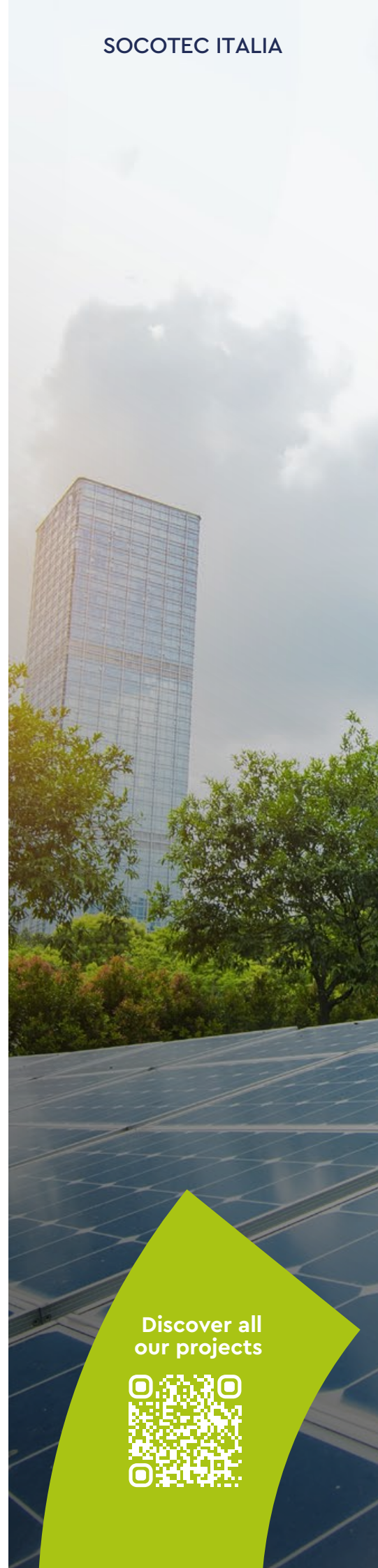


Scalo Milano Outlet
Opera, Italy

BREEAM® VERY GOOD

BREEAM® ASSESSOR

BREEAM® AP PROJECT



Discover all our projects



SOCOTEC GROUP



26 COUNTRIES

Germany
Saudi Arabia
Austria
Belgium
Colombia
Ivory Coast
Spain
USA
UAE
France
Ireland
Italy
Japan

Lebanon
Luxembourg
Madagascar
Morocco
Mauritius
Monaco
Netherlands
Philippines
Poland
United Kingdom
Singapore
Thailand
Vietnam

7 PLATFORMS



190 SITES IN FRANCE

Including 29 training centers and 17 nuclear training facilities

15 500
EMPLOYEES

6 500
ENGINEERS

250 000
CLIENTS

€1.85 Bn
REVENUE

250
EXTERNAL
CERTIFICATIONS

CONTACT US

infoitalia@socotec.com
www.socotec.it



**BUILDING TRUST FOR A SAFER
AND SUSTAINABLE WORLD**